

Treatment of the severe rigidity in the morning by Parkinson

Jan Van de Rakt ^{1*}, Steve McCarthy-Grunwald ²

¹Physical Therapist NDT teacher IBITA, Course Leader and teacher on the Dutch Institute for Allied Health Sciences. Nursing Home “Waelwick” in Ewijk the Netherlands.

²MSc BSc RMN Lecturer in Mental Health Nursing with Dementia Specialty. University of Cumbria, Bowerham Road, Lancaster, LA1 3JD England.

***Corresponding Author:** Jan van de Rakt, Physical Therapist NDT teacher IBITA, Course Leader and teacher on the Dutch Institute for Allied Health Sciences. Nursing Home “Waelwick” in Ewijk the Netherlands.

Received date: August 23, 2024; **Accepted date:** September 05, 2024; **Published date:** September 16, 2024

Citation: Jan Van de Rakt, Steve McCarthy-Grunwald, (2024), Treatment of the severe rigidity in the morning by Parkinson, *J. General Medicine and Clinical Practice*, 7(16); DOI:10.31579/2639-4162/219

Copyright: © 2024, Jan van de Rakt. This is an open-access article distributed under the terms of the Creative Commons Attribution License, which permits unrestricted use, distribution, and reproduction in any medium, provided the original author and source are credited.

Abstract

Background/ Aim.

Treatment of people with Parkinson will be continued through the whole life of this person. All away until the last phase often in a Nursing home and often is he/she dependent of an wheelchair /bed. The part of the disease in the beginning is well documented and the number of treatments are enormous and of an great high degree, but this degenerative disease will change the possibilities dramatic and then is treatment an lot more difficult and thus also the results are often minimal. This phase asked for our attention, intervention and measurements to develop a treatment with an evident base.

Design.

The approach done by people with dementia that are in the Foetal attitude was the start that our attention also goes to people with Parkinson in the last phase. Because the amount of stiffness was so height that the resemblance was great with paratonia. Paratonia is an pathological neurological tone increase that can lead to an attitude that is hardly to change and people where often cognitive total absent. Elements of this “picture” say we also by people with the last phase of Parkinson and often in morning and measurements of the tone give us the clarity that also there was an high pathological neurological tone.

Result.

The intervention though pressure on the feet by hard pillows and/or orthosis gave an reaction of “pushing away” and that is an movement. Movements does not possible when the tone was so high especially in the morning. Then this tone was around Mas-P= 4 but through this “stimulation” movements, this tone decreases almost 2 levels to Mas-P= 2. This tone decrease makes the whole morning ADL with the transfers and eating better possible and give the quality of live an positive kick.

Discussion and conclusion

The treatment possibilities for people at the end of the disease of Parkinson are limited but there are possibilities. This article about the reaction of hard pillows and/or orthosis with the investigation of the reaction though tone measurements should be an start for further good research how we can hold the quality of life as high as possible.

Kew Words: rigidity; Parkinson; last phase of parkinson disease; tone treatment through push-away orthosis

Introduction

Parkinson ‘disease is a degenerative disease that is increasing in the world through all kinds of reason but also through pesticides [1] and that asked for ban on it, but also for a network to treat and go along with this people the whole way of this disease. In the Netherlands is the ParkinsonNet start with this network that is also going international [2,3,4]. The result is that more

understanding is now for this disease and that people will be see earlier and therefore will a longer and especially an higher quality of life, be possible. But still, it is a neurological disease that will go over many years but the symptoms will be bigger and that asked for treatment that has an answer for everyone to make live as well as possible.

Stage	Hoehn and Yahr Scale	Modified Hoehn and Yahr Scale
1	Unilateral involvement only usually with minimal or no functional disability	Unilateral involvement only
1.5	-	Unilateral and axial involvement
2	Bilateral or midline involvement without impairment of balance	Bilateral involvement without impairment of balance
2.5	-	Mild bilateral disease with recovery on pull test
3	Bilateral disease: mild to moderate disability with impaired postural reflexes; physically independent	Mild to moderate bilateral disease; some postural instability; physically independent
4	Severely disabling disease; still able to walk or stand unassisted	Severe disability; still able to walk or stand unassisted
5	Confinement to bed or wheelchair unless aided	Wheelchair bound or bedridden unless aided

Table 1 [5]

The development of this disease is evident and it also obvious that at the end this people are dependent of assistance in all domains of movement and ADL. Further, the possibilities to speak, eat and swallowing at the end always a problem that need extra attention. Treatment with medications will

help for a long period and also but regrettable lesser at the end and then is it important that the caregivers around the person has possibilities to increase the quality of live. So will the Pisa attitude have an influence on the swallowing capacity of this person and can this be decrease for moments through the day so that eating, swallowing get better. [7,8]



Picture 1: The picture that for long time has THE association with the Parkinson disease. This isn't the picture that many people have, thanks to the increase of the treatment but regrettable will the attitude, the symptoms as stiffness, freezing, balance loss etc. be so clear that for all is assistance needed to get out the bed, in the clothes etc. In all books in literature this stiffness is a great problem and therefore must we search, what the cause of this stiffness is and or we can change/decrease it for moments through the day as by the Pisa syndrome.

In many literatures this stiffness is described as follow;

Stage 5 [6] "This is the most advanced and debilitating stage. Stiffness in the legs make it impossible to stand and walk. The person is bedridden or confined to a wheelchair unless aided. Around-the-clock care is required for all activities.

Rigidity

This stiffness has a direct association with the tone in the muscles-pattern and with the neural possibilities that the damaged brain has.

Quote [10]; Objective rigidity' in PD correlates with velocity-dependent abnormal neuronal activity. The observations overall (i.e. the velocity-dependent feature of biomechanical and neurophysiological measures of objective rigidity) would point to a putative subcortical network responsible for 'objective rigidity' in PD, which requires further investigation.[9]

Quote [11]; People with PD exhibit higher values in terms of objective muscle stiffness than healthy controls. Rigidity depends on the angular velocity and articular amplitude of the mobilization applied. There are objective, valid, and reliable methods that can be used to quantitatively assess rigidity in people with PD. [10,11]

This higher tone and loss of selectivity, dexterity is the adaptation that the damaged brain must do, to get, with his lowering possibilities, the optimal control over "mind" and body and that will at the end give this enormous stiffness – rigidity but when we help the brain with information than is it possible, on moments through the day create less rigidity and possibility to move etc. Cools [13,14] et al. use the circles according Fowles to make clear what the alternatives are when a system in the brain lost their function. This has led to treatment with all kinds of cues [12] etc. and give us possibilities so seek for alternative route to decrease the rigidity for certain moments. This element that the treatment will never have a great affect through the whole day, has to do with the capacity of the damaged brain and his capacity to react on information and also on the level of this information -input- because not all input and certainly in stage 5 will enter the brain and has the same effect.

According to Cools et al. must this a stimulus on extero- /proprioceptive level and dynamic. This dynamic is so important because than will the extinction [15] be low but it has also an aspect that this group of people has a low cardio/pulmonal system, thus are they not capable to react long on this dynamic extero-/proprioceptive stimuli.

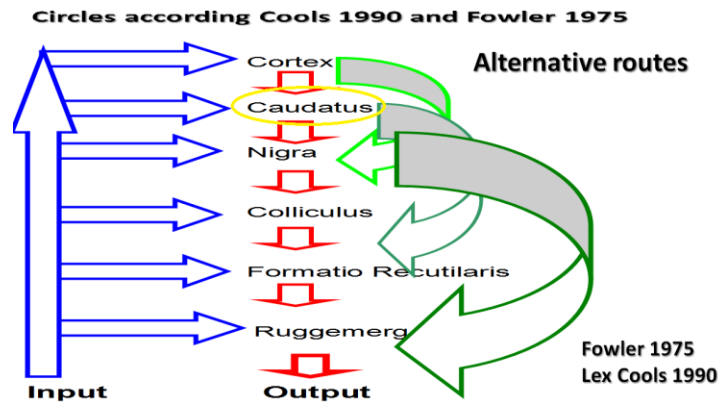


Figure 1: This figure gives a picture what the damaged brain does to decrease the effect of an bad functioning of the area around the caudates by searching for other ways. See the upper circle through the cortex, this cost more time but the control on tone, selectivity is than still possible. But when the disease progressed is this circle not possible anymore and are there only circles on a lower level possible and that has as consequences.

The consequences when the brain must use lower levels is;

- Tone will be increase, because to control the amount of freedom degrees [16] is without the projection on the cortex difficult and that means that through the higher tone the possibilities for movements in the joint is lesser.
- Also, will the damage brain use the static reactions [17] from local, segmental, general to total, also to get more control over the movement possibilities.
- This will visible, because movements have not so much variation, this stereotype movement is a sign of the occurrence of pathological synergy in the body. It is good to realize that this synergy [18,19] started in the trunk and follow the decline in dexterity of the front- and back diagonals.
- The back diagonals will be the dominant on brain level thus at the end we see:
 - Extension in the neck

- Extension in the upper trunk, thus the start of a flexion synergy in the arms
- Extension in the lower trunk is often small and around the spine
- That give an extension synergy in the legs with a dominancy of adduction that also determinate their amount of extension and endorotation.
- This end often with a plantar flexion, the pes equinus varus, the striker foot. [20,21]

Scientific evidence.

Scientific evidence is collected in the work of “The New Cognitive Neurosciences “under chief editor Cazzaniga [21c], the present of the projection in the brain and the greatness of it, determinate selectivity, dexterity, differentiation and height of tone. Damage og the somatosensory cortex forced the damaged brain to use lower situated projections, with restricted possibilities.

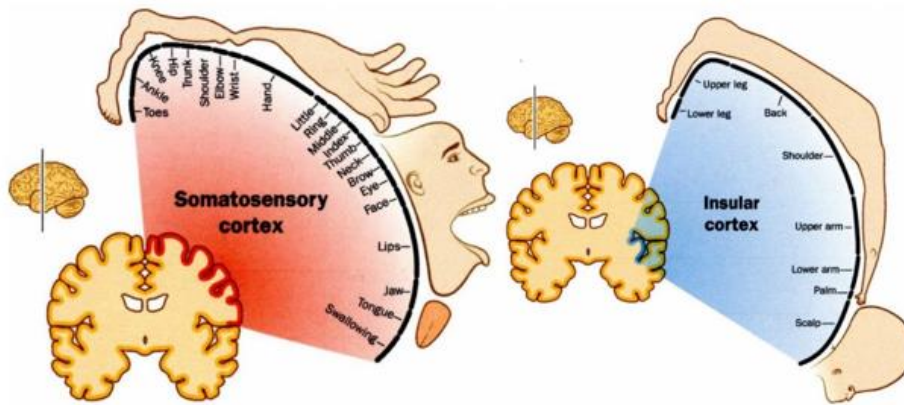


Figure 2

Figure 3

Figure 2 and 3: The projections on the somatosensory cortex figure 2 let us see much room for selectivity and thus movements variations but when we these projections see on the insular cortex than is that room almost gone and lies the focus on the base of the trunk and will the system must use, a system with limited movements possibilities. This will be achieved through the use of pathological synergies with a high tone and the highest tone will be used to create no movements at all.

This adaptation will create another way of moving and/or holding an attitude, thus must we search for another intervention. **This will give the follow picture!**



Photo 1



Picture 2

Photo 1 and Picture 2: The photo and the picture are the same person but through the picture is the attitude of the arms and legs clearer and see we the dominance of the back diagonals and thus the dominance of the flexion synergy (arms) and extension synergy (legs). Always lies by many people the focus on the feet and hand but by degenerative neurological disease will often early in the developmental of the disease the greatest tone increases and the necessary to use the synergy, lies in the trunk and the great joint as shoulder and hip and that because they are necessary to hold the balance etc. On the photo is the position of the elbow therefore on the bench, he is trying to move and push.

Look at his right hand, he holds handkerchief there is selectivity but, in this situation, will this handkerchief be very difficult to get to his mouth as his elbow stay on the bench. The fact that his head (extension and see the stretch tension on his throat) that this upper trunk stand in extension and lower trunk stand also in extension. Extension? we see a kyphosis but look at picture 1 this kyphosis is an eccentric extension and on photo 1 en picture 2 is the amount of concentric much higher and is his ability to move very restricted through that high tone and every attempt will this tone raise. In bed is this person in phase 4-5 thus more disable as when he stands or sit. Every attempt to move asked for an action of the front diagonals and that will be inhibit through the dominance of the back diagonals [22]. It is important to realize that lying in a bed and move in that bed, asked for a movements strategy that is for someone with this dominance of the back diagonal heavier than sit or stand or simple make movement in that attitude. Of course, will the transition from sit to stand be also very heavy.

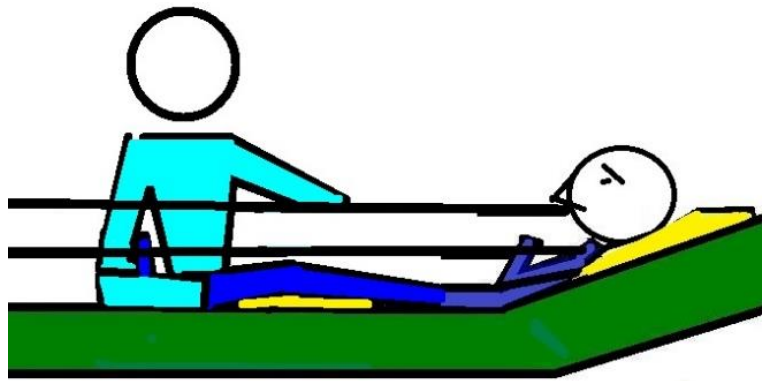
Long lying in one attitude.

The difficulty of changing the lying attitude and often the long period that people are lying in the same position will change often the tone dramatically and in the morning this person has often a tone that is at his maximum [23,24,25,26]. This rigidity can be so high that no movement can occur, certainly not on his own and caregivers must try to get the arms and legs in motion and that asked often, much effort. The transfers in and out bed together with the washing and dressing make this a hell of a job for both. Though the danger of pressure scores is this person often on an bed with an anti -decubitus matrass that is capable to divide the pressure and decrease that risk. But out the research from people with paratonia through dementia [27,28] we known, that this can be an instable base that will increase the tone and create an attitude with a tone of Mas-P 4 and create an attitude known as the Foetal attitude. This tone increase will give much more pressure and an increase on pressure scores. This extreme high tone allows no movement and that same we see by people in the phase 5 often in the morning after a long period of lying. We therefore use the approach that we use for people in the Foetal attitude, by people with a high rigidity especially in the morning.

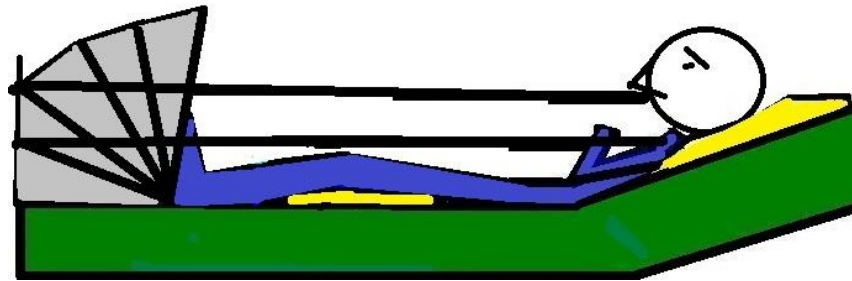
First, we make the bed stable through fill the anti-decubitus with air and create so a stable matrass, some people, in previous phase, where now better capable to start with some movements on their "own" and this movements create a tone decrease what we want to get the transfers and the ADL on a better level for both parties and decrease the decubitus (pressure score) risk. But the group in the phase 5 with the rigidity that is extreme, was this not enough. Still the base is important because the other inventions were lesser effective, without this stable base and this reaction on this stable base asked for an amount of time. The idea that: "make the matrass hard" and the movements start is wrong idea, this will often cost some time before this information enter the brain and the first reaction will occur. Thus, start with this a half hour before you start with the ADL and transfers with creating a stable and hard base because that give a reaction [29] by many people with neurological disorders. Therefore, the group in phase 5 need certainly this base and certainly for a half hour before we go to stimulated this person to push!

Push/away orthosis.

The principle is to stimulated the person to move. In this case we try to give a proprioceptive and exteroceptive stimulus that enter the brain and stimulate this person to move. That means that the stimulation must be so that it enters the brain, this damaged brain must "feel" this stimulation, only than is a reaction possible. In the Fetal attitude treatment, we could with this intervention decrease the tone about 2 levels (from Mas-P 4 "no movement at all" to Mas-P 2" movement with a clear resistance") [25] and often the cognition improves but the restriction was always that this was only when the person lies stable and it works only for one hour, sometimes more. And this intervention has need for a preparation from minimal a half hour on a stable bed and after that, could be start with the push-away orthosis. By people with Parkinson could an orthosis be necessary but sometimes was a stable - hard- bed with some hard pillow under the feet enough to get the effect of push-away. This because (see photo 1) the legs are often still in extension and then could a padding of the area be possible but important is that there must be a tension in the situation that the "brain" must feel because than will there be a reaction.



Picture 3: A situation in which the therapist test what the amount of pressure against the feet sole will give the push-away reaction. In this case no clear loss of mobility in the joint thus when the reaction is there, will this be on call with some hard pillow – picture 4

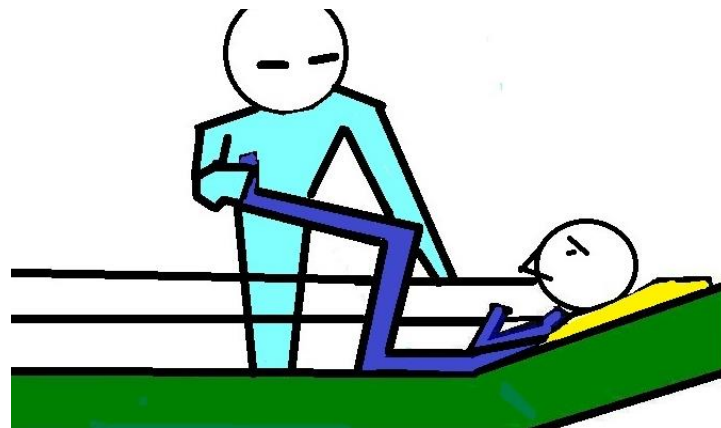


Picture 4: Now the space between the feet and the back of the bed is full with hard pillow and the dorsal flexion is maximal, this all to stimulated the brain to push away. Often people find this not fine and that means that the stimulus has enter the brain. Important detail the head rest stand up and that is important by all neurological diseases because flat lying can increase the extension tone starting in the neck and that makes a reaction more difficult (Tonic Labyrinth Reaction [17]).

Thus, a stable bed and after a reaction on it, the push-away pillows. Thus, this starts about an hour before the caregivers start with the ADL and transfers. Of course, asked every individual for an own approach and also the timing but a good multidisciplinary team will find this fast. When the mobility in the joints is restricted through so-called “contractures” [20] than is the stability much more difficult and is beside a stable bed, a head rests up also an orthosis necessary to create that stability. Thus, first increase stability and then must we determinate how we can change this orthosis in a push-away orthosis.

That means 3 elements and every time test the tone after that intervention;

- *Reaction on an increase hardness of the matrass and head-rest up.*
- *Reaction on the orthosis to increase the stability.*
- *Reaction on the push-away orthosis to determinate what the position of the legs must be, to create that push-away stimulus.*



Picture 5: Test to determinate in which position this person push the hand away, that stand against the foot soles.

But again, this push-away orthosis will be useful in a restricted amount of time and thus on 2 or 3 occasion through the day with an effect of an hour mostly!

However, when this effect can increase through a harder matrass, head rest position and an orthosis that stabilized the legs and can give an elongation of this effect.

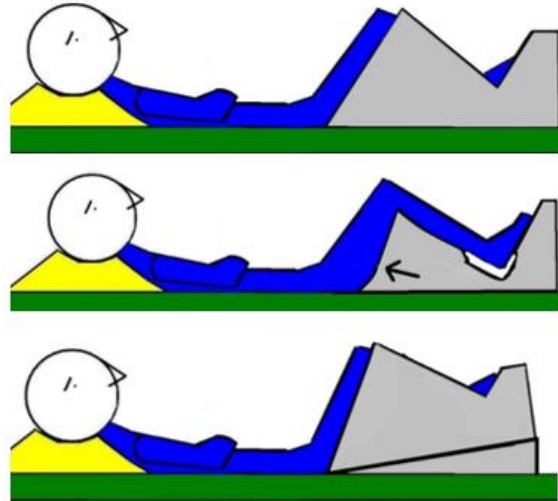
This orthosis must give stability, that stability must enter the brain and to controlled that is only measurement of the tone the right option and not the picture that we see. Often the comment is that the person lies relaxed but when the tone was measured the opposite was true. The tone was so high that movement wasn't possible.

And always measure the tone when there is a reaction and measure also after hour. We know that measurements can increase the tone but it is so important to know what the interventions do!

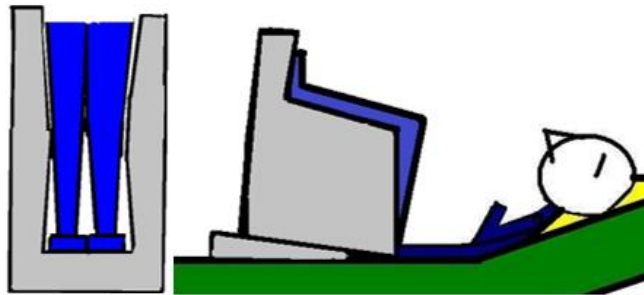
There are the criteria for such an orthosis;

- The material; must be hard/firm.

- Never must the attitude be reach through treatment, but the legs must be placed without some effort.
- The legs must be lie against each other, only a towel or a little soft pillow can be place between. This because the feet/legs inform each other and will have an influence on the tone.
- Always must the end of the orthosis give a support for the feet and never must this part disappear because than is that information gone and will the tone increase.
- Always search for other information sources as the backside/ outside of the buttock and upper legs but also the outside of the under-legs can this provide.



Picture 6, 7 and 8: How the orthosis is built up with a clear support area for the feet and still with a protection “gap” for the heel to prevent pressure scores (picture 7). Picture 7 let us see how an orthosis looks like when the side part is “removed”. Picture 8 give an impression when we place an extra part under the orthosis to create a push away orthosis.



Picture 9 and 10: The first picture let us see how the legs are placed in the orthosis and make clear how this gives information but also stability not only by the feet but also along the side and back of the legs. Picture 10 give an impression when the position of the legs is extreme than must the orthosis be so that placing can be easy and again with an extra piece can change in an push-away orthosis.

Discussion and Conclusion

The last stage of the disease of Parkinson gives often a tone that is extreme and make people so stiff that movement starting is almost impossible Especially in the morning is this often a great problem for both parties. There is a solution with its restriction qua time and can help the start and other moments through the day. The morning makes transfers and ADL easier but often also the possibilities to eat/swallow and there is often also a cognitive improvement. Through wise chooses through the day can these moments give a better quality of life, but it asked for measurements of the tone and. a multidisciplinary team. This measurement of the tone is so important because than will be clear or this intervention works and when not, it should inspire

us to search further. The effect of the treatment of the Pisa -syndrome [7] through higher pressure with the reaction of pushing away, has never be found as the tone measurements not be the base for this investigation and treatment.

References

1. Islam MS, Azim F, Saju H, Zargaran A, Shirzad M, et al., (2021). Ebrahimi-Barough S. Pesticides and Parkinson's disease: Current and future perspective. *J Chem Neuroanat. Sep;* 115:101966.
2. Bloem BR, Okun MS, Klein C. (2021). Parkinson's disease. *Lancet. Jun 12;397(10291):2284-2303.*

3. Bloem BR, Brundin P. (2020). Parkinson's Disease: We Care! *J Parkinsons Dis*;10(s1): S1-S3.
4. Parkinson Net International
5. Hoehn M, Yahr M (1967). "Parkinsonism: onset, progression and mortality". *Neurology*. **17** (5): 427–442.
6. [https://Parkinsonnsw.org.au/understanding-the-five-stages-](https://Parkinsonnsw.org.au/understanding-the-five-stages)
7. Van de Rakt J, McCarthy Grunwald S. (2020). Possible treatment for the Pisa - Syndrome by Parkinson disease. A case report. *Ita. J. Sports Reh. Po.*; 7; 2; 1522 -1545 ISSN 2385-1988 [online] IBSN 007-111-19 - 55 CGI J OAJI:0,101
8. Van de Rakt J, McCarthy-Grunwald S. (2021). Swallowing and the attitude of the neck/body! ; *Ita. J. Sports Reh. Po.*; 8 (17); 2; 1; 1745 - 1783
9. Ascì F, Falletti M, Zampogna A, Patera M, Hallett M, ET ALL., (2023). Rigidity in Parkinson's disease: evidence from biomechanical and neurophysiological measures. *Brain*. Sep 1;146(9):3705-3718.
10. Ferreira-Sánchez MDR, Moreno-Verdú M, Cano-de-la-Cuerda R. (2020). Quantitative Measurement of Rigidity in Parkinson's Disease: A Systematic Review. *Sensors (Basel)*. Feb 6;20(3):880.
11. Sepehri, B., Esteki, A., Ebrahimi-Takamjani, E. et al. (2007). Quantification of Rigidity in Parkinson's Disease. *Ann Biomed Eng* **35**, 2196–2203
12. Ivan BBC 1990 Belgische uitzending "Om elkaar "
13. Willner P, Bergman J, Vanderschuren L, Ellenbroek B. (2015). The behavioral pharmacology of the basal ganglia: in memory of Lex Cools. *Behav. Pharmacol.* 2015 Feb;26(1-2):1-2.
14. Cools L. (2007). Beweging en bewegen worden PAOG uitgave Nijmegen.
15. Delamater AR, Westbrook RF. (2014). Psychological and neural mechanisms of experimental extinction: a selective review. *Neurobiol Learn Mem*.Feb;108:38-51.
16. Bernstein The coordination and regulation of movements Pergamon Press New York 1967
17. Barnes M,Johnson G.(2001). Upper motor neurone syndrome and spasticity Uitgever; *Cambridge University Press*. ISBN 0521794277
18. Santello M, Lang CE. (2015). Are movement disorders and sensorimotor injuries pathologic synergies? When normal multi-joint movement synergies become pathologic. *Front Hum Neurosci*. Jan 6; 8:1050.
19. Van de Rakt J, McCarthy-Grunwald S. (2017). Diagonals Part Five – Pathology How can we develop the diagonals so each individual achieves optimal recovery following a stroke? *Ita. J. Sports Reh. Po*,4,1 ; 746 -788
20. Van de Rakt J. (2015). Spitsvoet (pes equinus varus) bij CVA patiënten. *Fysiotherapie & Ouderenzorg nr 3*.
21. Van de Rakt J, McCarthy-Grunwald S. (2016). The beginning of 'striker foot' (Pes equinus varus) with severe stroke patients *Ita J Sports Reh Po*; 3; 1; 477 -498;
22. Jan Van de Rakt, Steve McCarthy-Grunwald, (2024), Pes Equinus Varus (Striker Foot) Why this Occur by Adults! *J. General Medicine and Clinical Practice*, 7(5);
23. "The New Cognitive Neurosciences "under chief editor Cazzaniga ISBN: 9780262071956, 2000. Scholar press.
24. 22a. Fujiwara, T. (2020). Mini-review article: the role of spinal reciprocal inhibition and intracortical inhibition in functional recovery from stroke. *Exp Brain Res* **238**, 1701–1705
25. Mirelman A, Hillel I, Rochester L, Del Din S, Bloem BR, ET ALL., (2020). Tossing and Turning in Bed: Nocturnal Movements in Parkinson's Disease. *Mov Disord*. Jun;35(6):959-968.
26. Baradaran N, Tan SN, Liu A, Ashoori A, Palmer SJ, ET ALL., (2013). Parkinson's disease rigidity: relation to brain connectivity and motor performance. *Front Neurol*. Jun 5; 4:67.
27. Bohannon R.W. Suith M.B. (1987). Interrater reliability of a modified Ashworth scale of muscle spasticity *Physeter. a*(67(2)) 206-207
28. Waardenburg H. (1999). en anderen. Is paratonie betrouwbaar te meten ? *Ned.Tijdsch.v.Fysio*
29. Overbeek B, Lavrijsen J and Eilander H. (2010). Vegetatief of laagbewust? Het moeilijke onderscheid tussen niets weten en een beetje. *NTVG*.
30. V.d.Rakt J. (1996). Hypothese over het ontstaan van de foetale houding in psychogeriatric Keypoint 5.
31. Van de Rakt J. Het "Rakt" (2000). concept. Tijdschrift Fysiotherapie en Ouderenzorg, 2001.
32. Affolter F. Perception,Interaction and language Springer verlag ISBN 3-540-51150-51154
33. Van de Rakt J. McCarthy-Grunwald S. (2020). Treatment possibilities of "contractures "by neurological diseases. *Ita. J. Sports Reh. Po*; 7; 1; 1450 -1478;



This work is licensed under Creative Commons Attribution 4.0 License

To Submit Your Article Click Here: [Submit Manuscript](#)

DOI:10.31579/2639-4162/219

Ready to submit your research? Choose Auctores and benefit from:

- fast, convenient online submission
- rigorous peer review by experienced research in your field
- rapid publication on acceptance
- authors retain copyrights
- unique DOI for all articles
- immediate, unrestricted online access

At Auctores, research is always in progress.

Learn more <https://www.auctoresonline.org/journals/general-medicine-and-clinical-practice>